

FOR LEASE



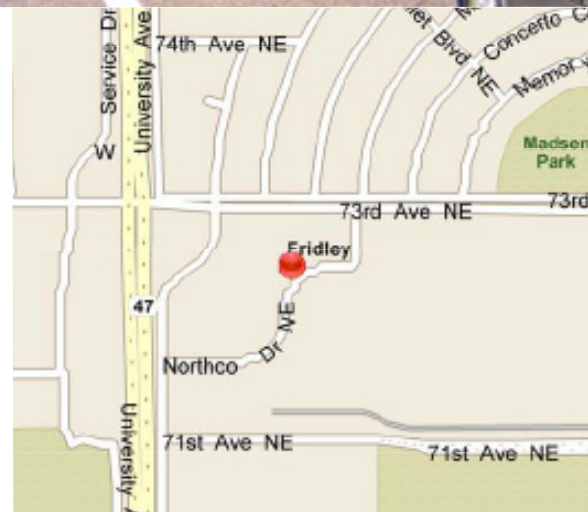
North Central I

FRIDLEY, MINNESOTA



Building Amenities

- > 31,699 total building square feet
- > 15,799 square feet of office space available now!
- > Divisible to 1,217 square feet
- > 12,079 square feet contiguous
- > Available immediately
- > Generous TI packages
- > Easy access to University Avenue & Central Avenue



COLLIERS INTERNATIONAL
5985 Rice Creek Parkway, Suite 105
Shoreview, MN 55126

www.colliers.com

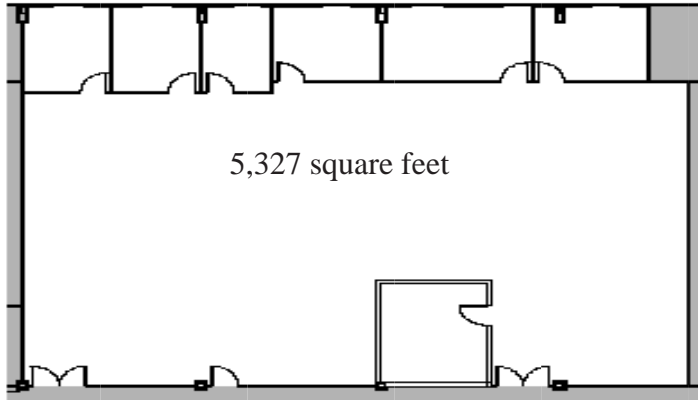
DAN FRIEDNER
952 879 7863 direct
612 599 7864 mobile
dan.friedner@colliers.com

JAY CHMIELESKI
952 897 7801 direct
612 275 3772 mobile
jay.c@colliers.com

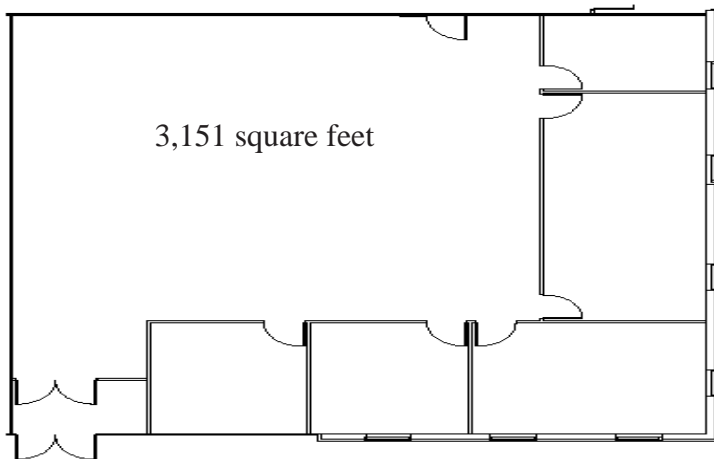
JUSTIN RATH
952 897 7803 direct
612 720 6957 mobile
justin.rath@colliers.com



North Central I > Floor Plan



FLOOR PLAN



FLOOR PLAN



Contact Us

DAN FRIEDNER
952 897 7863 direct
612 599 7864 mobile
SHOREVIEW, MN
dan.friedner@colliers.com

JAY CHMIELESKI
952 897 7801 direct
612 275 3772 mobile
SHOREVIEW, MN
jay.c@colliers.com

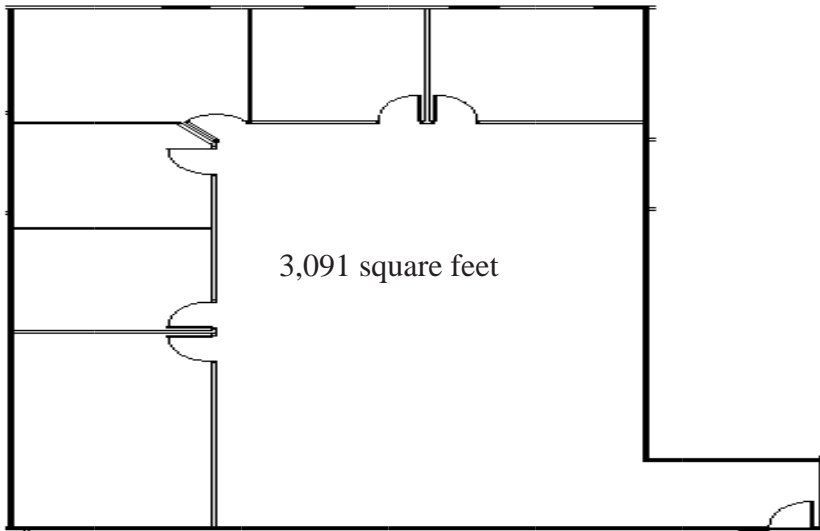
JUSTIN RATH
952 897 7803 direct
612 720 6957 mobile
SHOREVIEW, MN
justin.rath@colliers.com



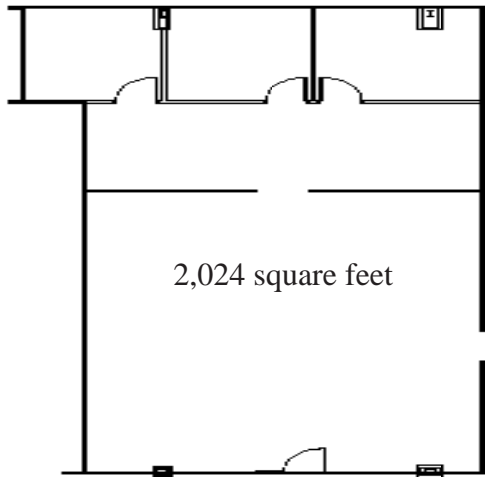
COLLIERS INTERNATIONAL
5985 Rice Creek Parkway, Suite 105
Shoreview, MN 55126
www.colliers.com



North Central I > Floor Plan



FLOOR PLAN



FLOOR PLAN



Contact Us

DAN FRIEDNER
952 897 7863 direct
612 599 7864 mobile
SHOREVIEW, MN
dan.friedner@colliers.com

JAY CHMIELESKI
952 897 7801 direct
612 275 3772 mobile
SHOREVIEW, MN
jay.c@colliers.com

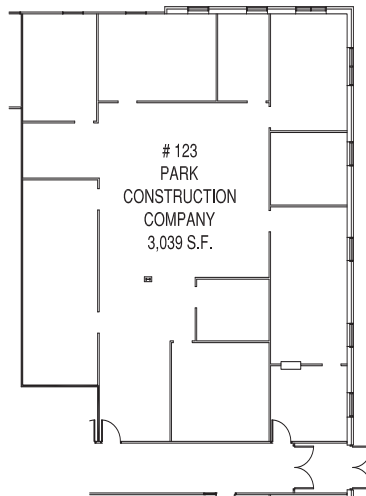
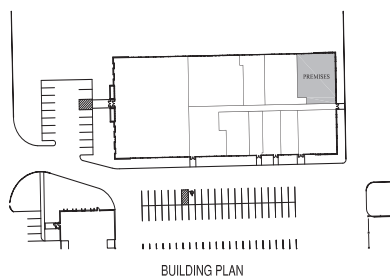
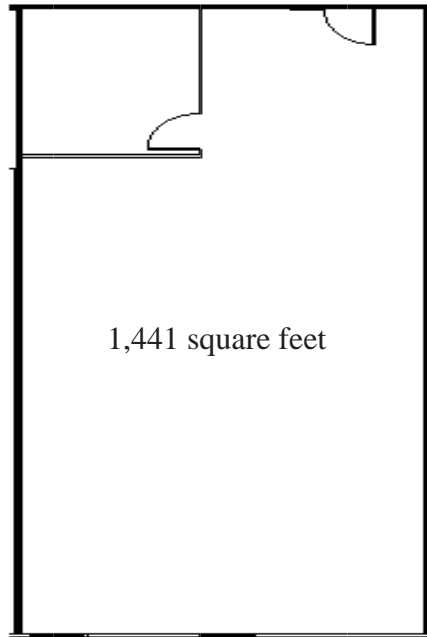
JUSTIN RATH
952 897 7803 direct
612 720 6957 mobile
SHOREVIEW, MN
justin.rath@colliers.com



COLLIERS INTERNATIONAL
5985 Rice Creek Parkway, Suite 105
Shoreview, MN 55126
www.colliers.com



North Central I > Floor Plan



Contact Us

DAN FRIEDNER
952 897 7863 direct
612 599 7864 mobile
SHOREVIEW, MN
dan.friedner@colliers.com

JAY CHMIELESKI
952 897 7801 direct
612 275 3772 mobile
SHOREVIEW, MN
jay.c@colliers.com

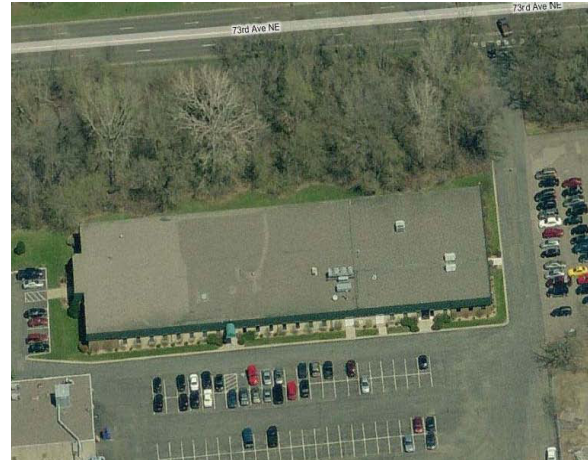
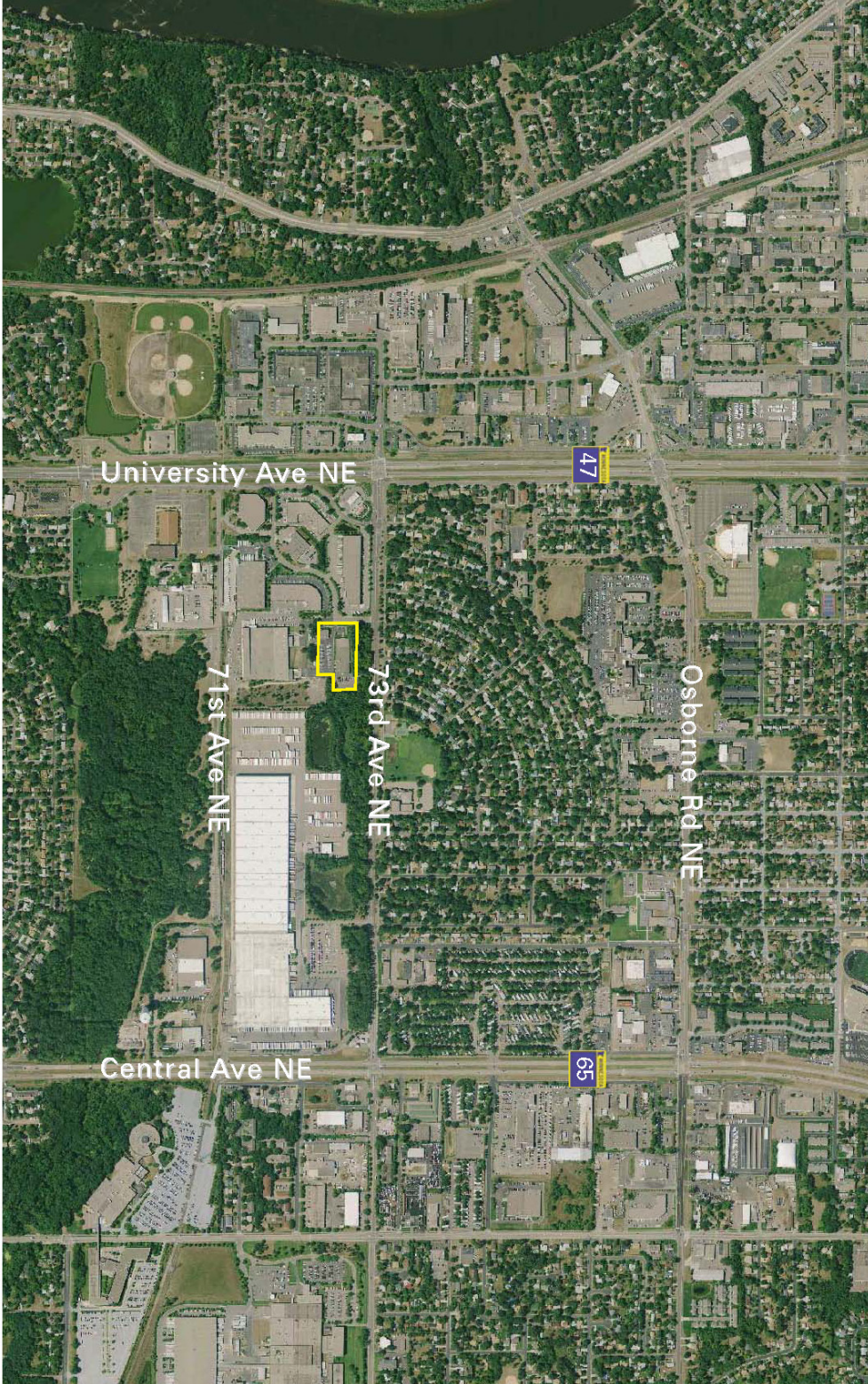
JUSTIN RATH
952 897 7803 direct
612 720 6957 mobile
SHOREVIEW, MN
justin.rath@colliers.com



COLLIERS INTERNATIONAL
5985 Rice Creek Parkway, Suite 105
Shoreview, MN 55126
www.colliers.com



North Central I > Aerial



Contact Us

DAN FRIEDNER
952 897 7863 direct
612 599 7864 mobile
SHOREVIEW, MN
dan.friedner@colliers.com

JAY CHMIELESKI
952 897 7801 direct
612 275 3772 mobile
SHOREVIEW, MN
jay.c@colliers.com

JUSTIN RATH
952 897 7803 direct
612 720 6957 mobile
SHOREVIEW, MN
justin.rath@colliers.com



COLLIERS INTERNATIONAL
4700 Lexington Avenue N, Suite B
Shoreview, MN 55126
www.colliers.com



North Central I

FRIDLEY, MINNESOTA

BUILDING LEASE

PROPERTY ADDRESS:

500 73rd Avenue NE
Fridley, MN 55432

BUILDING SIZE:

31,699 square feet

AVAILABILITY:

Now

YEAR BUILT:

1970

NET LEASE RATES:

\$4.50 per square foot

2016 EST. CAM & TAX:

\$6.10 per square foot - CAM
\$1.57 per square foot - tax

AVAILABLE FOR LEASE:

15,799 square feet of office
12,079 square feet contiguous

SPACES AVAILABLE:

Suite 105: 4,428 square feet
Suite 112: 1,127 square feet
Suite 114: 1,286 square feet
Suite 119: 1,796 square feet
Suite 121: 2,752 square feet
Suite 123: 3,103 square feet

UTILITIES:

Utility services to be separately metered and the responsibility of tenant, along with janitorial, trash removal, etc.

AMENITIES:

- Generous TI packages
- Easy access to University Avenue & Central Avenue
- Ample parking
- Building break room/meeting area



For Leasing Information, Contact:

DAN FRIEDNER
952 897 7863 direct
612 599 7864 mobile
dan.friedner@colliers.com

JAY CHMIELESKI
952 897 7801 direct
612 275 3772 mobile
jay.c@colliers.com

JUSTIN RATH
952 897 7803 direct
612 720 6957 mobile
justin.rath@colliers.com

COLLIERS INTERNATIONAL
5985 Rice Creek Parkway, Suite 105
Shoreview, MN 55126
www.colliers.com