

North Star Distribution Center

19730 South Diamond Lake Rd, Rogers, MN



CSM



CUSHMAN &
WAKEFIELD

HOME

HIGHLIGHTS

BLDG FEATURES

AERIAL

MAP

BLDG PLAN

UTILITY PLAN

SITE PLAN

116,544 SF Available



For more information, please contact:

Jason Meyer

Executive Director

+1 952 820 8735

jason.j.meyer@cushwake.com

Brent Masica

Executive Director

+1 952 893 8231

brent.masica@cushwake.com

Jonathan R. Yanta, SIOR, CCIM

Executive Director

+1 952 820 8734

jon.yanta@cushwake.com

Danny McNamara

Associate

+1 952 893 8895

danny.mcnamara@cushwake.com

3500 American Blvd W #200

Minneapolis, MN 55431

cushmanwakefield.com

Visit us at: IndustrialMN.com

North Star Distribution Center

19730 South Diamond Lake Rd, Rogers, MN



CSM



CUSHMAN & WAKEFIELD

HOME

HIGHLIGHTS

BLDG FEATURES

AERIAL

MAP

BLDG PLAN

UTILITY PLAN

SITE PLAN

116,544 SF Available
Divisible to 50,000 SF

Property Highlights

- Short term occupancies available
- Easy Access to I-94, Highway 101 and County Rd 81
- Located in Rogers Distribution Park
- Close proximity to retail and restaurants
- Abundant glass line
- Tremendous natural light - clear story windows in each warehouse bay
- 50' concrete apron
- Double-loaded trailer parking
- I-1 zoning with outside storage
- Owned and managed by CSM



©2018 Cushman & Wakefield NO WARRANTY OR REPRESENTATION, EXPRESS OR IMPLIED, IS MADE TO THE ACCURACY OR COMPLETENESS OF THE INFORMATION CONTAINED HEREIN, AND SAME IS SUBMITTED SUBJECT TO ERRORS, OMISSIONS, CHANGE OF PRICE, RENTAL OR OTHER CONDITIONS, WITHDRAWAL WITHOUT NOTICE, AND TO ANY SPECIAL LISTING CONDITIONS IMPOSED BY THE PROPERTY OWNER(S). AS APPLICABLE, WE MAKE NO REPRESENTATION AS TO THE CONDITION OF THE PROPERTY (OR PROPERTIES) IN QUESTION.

For more information, please contact:

Jason Meyer

Executive Director

+1 952 820 8735

jason.j.meyer@cushwake.com

Brent Masica

Executive Director

+1 952 893 8231

brent.masica@cushwake.com

Jonathan R. Yanta, SIOR, CCIM

Executive Director

+1 952 820 8734

jon.yanta@cushwake.com

Danny McNamara

Associate

+1 952 893 8895

danny.mcnamara@cushwake.com

3500 American Blvd W #200

Minneapolis, MN 55431

cushmanwakefield.com

Visit us at: IndustrialMN.com

North Star Distribution Center

19730 South Diamond Lake Rd, Rogers, MN



CSM



CUSHMAN &
WAKEFIELD

HOME

HIGHLIGHTS

BLDG FEATURES

AERIAL

MAP

BLDG PLAN

UTILITY PLAN

SITE PLAN

Building Features

Total Available Square Feet	116,544 sf Divisible to 50,000 sf
Clear Height	32'
Column Spacing	50' x 50'
Loading	29 dock doors 1 12' x 14' ramped drive-in door
Dock Equipment	7' x 8' Serco Levelers, bumpers and seals on every other loading door
Bay Depths	260'
Parking Ratio	0.78/1,000 sf
Trailer Parking Stalls	10
Sprinkler System	ESFR
Base Rents	Negotiable
2019 Tax/CAM	\$2.23 psf Total
Notes	Utility services to be separately metered and the responsibility of tenant, along with janitorial, trash removal, etc.



For more information, please contact:

Jason Meyer
Executive Director
+1 952 820 8735
jason.j.meyer@cushwake.com

Brent Masica
Executive Director
+1 952 893 8231
brent.masica@cushwake.com

Jonathan R. Yanta, SIOR, CCIM
Executive Director
+1 952 820 8734
jon.yanta@cushwake.com

Danny McNamara
Associate
+1 952 893 8895
danny.mcnamara@cushwake.com

3500 American Blvd W #200
Minneapolis, MN 55431
cushmanwakefield.com

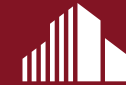
Visit us at: IndustrialMN.com

North Star Distribution Center

19730 South Diamond Lake Rd, Rogers, MN



CSM



CUSHMAN & WAKEFIELD

HOME

HIGHLIGHTS

BLDG FEATURES

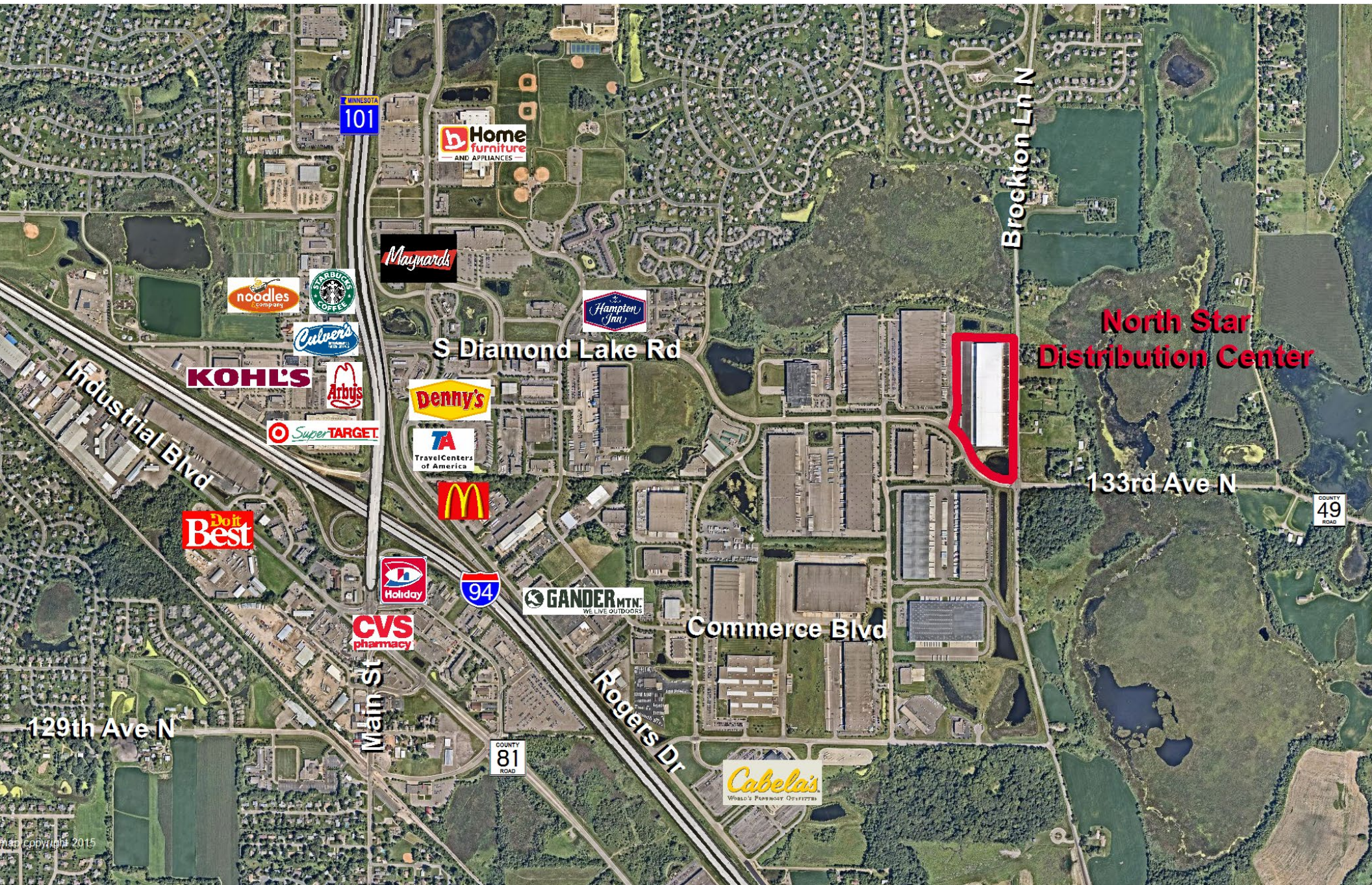
AERIAL

MAP

BLDG PLAN

UTILITY PLAN

SITE PLAN

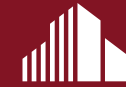


North Star Distribution Center

19730 South Diamond Lake Rd, Rogers, MN



CSM



**CUSHMAN &
WAKEFIELD**

HOME

HIGHLIGHTS

BLDG FEATURES

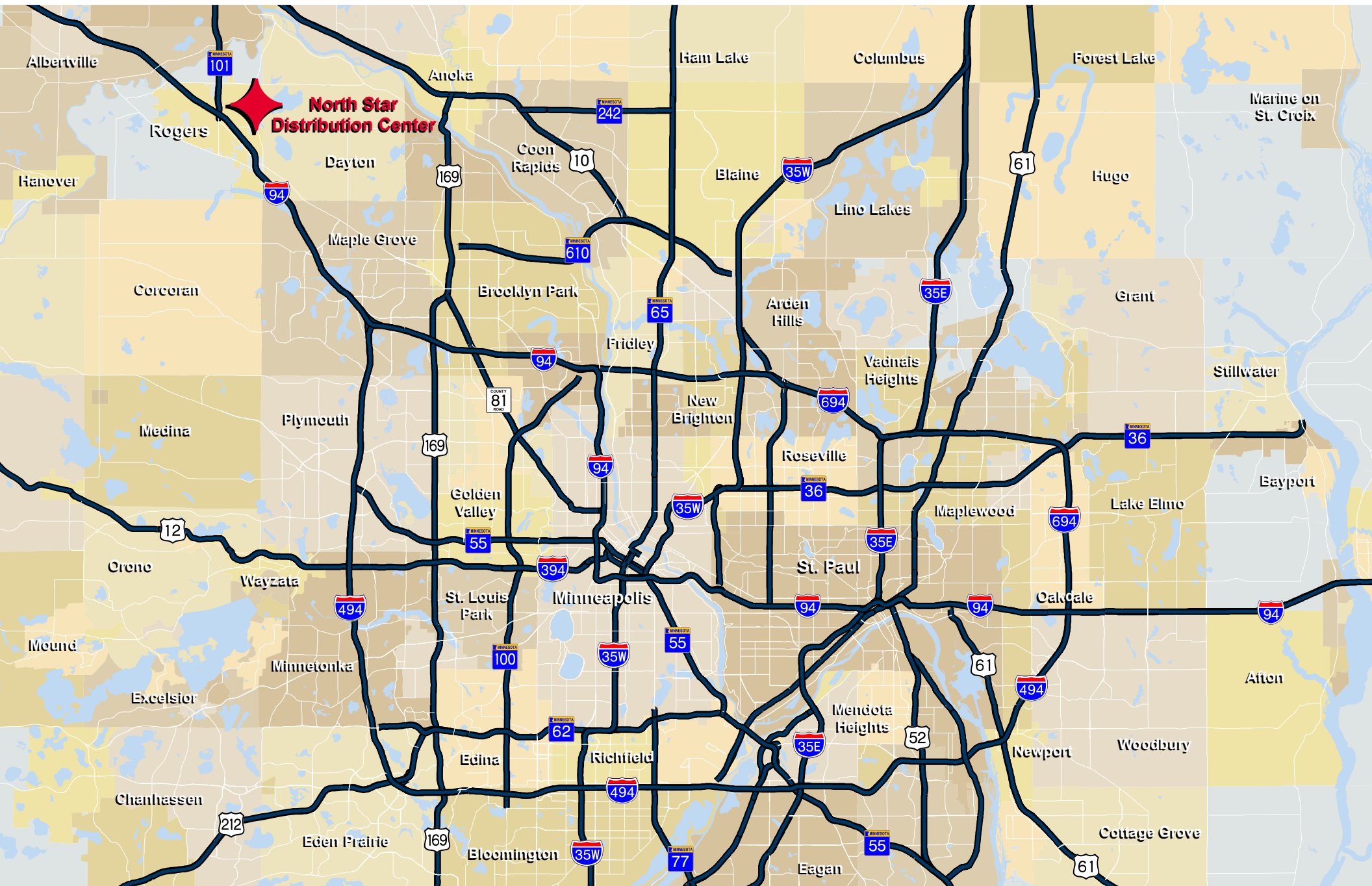
AERIAL

MAP

BLDG PLAN

UTILITY PLAN

SITE PLAN



North Star Distribution Center

19730 South Diamond Lake Rd, Rogers, MN



CSM



CUSHMAN & WAKEFIELD

HOME

HIGHLIGHTS

BLDG FEATURES

AERIAL

MAP

BLDG PLAN

UTILITY PLAN

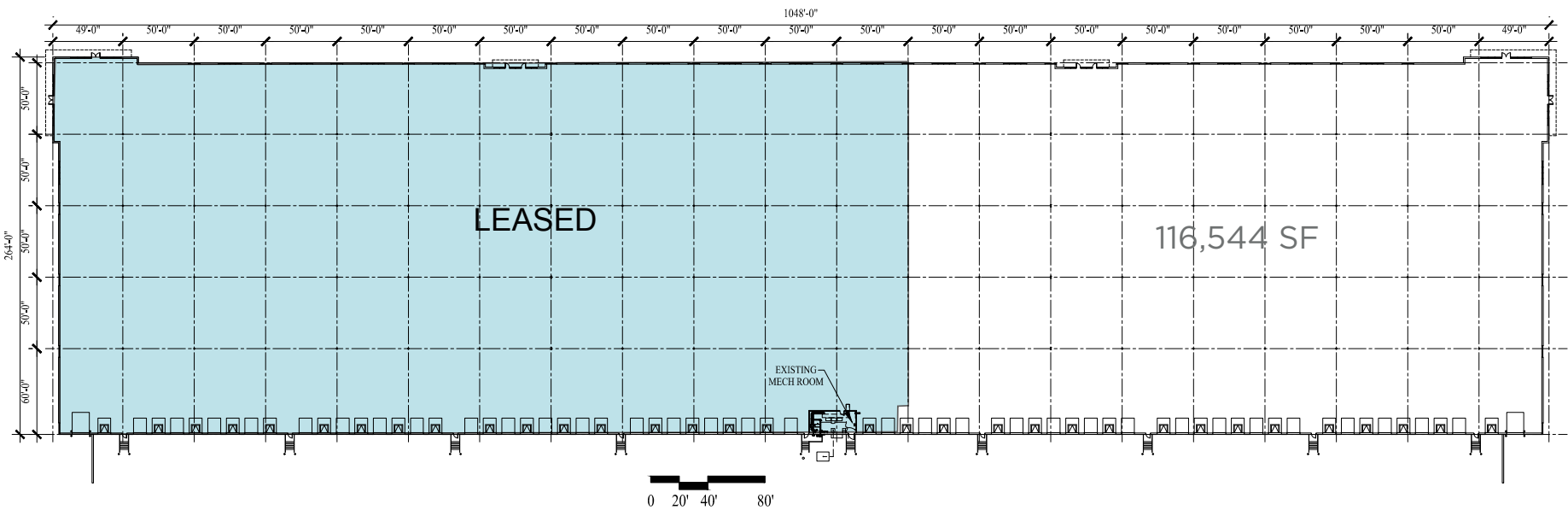
SITE PLAN

AS-BUILT BUILDING PLAN

BD-1

AS OF

5/10/16



FLOOR PLAN
SCALE: SEE GRAPHIC SCALE



NORTH STAR DISTRIBUTION CENTER
ROGERS, MN
7145 - 7165 BOONE AVE. N.
BROOKLYN PARK, MN 55428

DATE: MAY 10, 2016
DRAWN BY: MATT ROBERTSON



500 Washington Avenue South, Suite 3000
Minneapolis, MN 55415
Bus: (612) 395-7200 Fax: (612) 395-7002
DEVELOPING REAL ESTATE FOR PEOPLE,
BUSINESS & COMMUNITIES

BD-1

North Star Distribution Center

19730 South Diamond Lake Rd, Rogers, MN



CSM



CUSHMAN & WAKEFIELD

HOME

HIGHLIGHTS

BLDG FEATURES

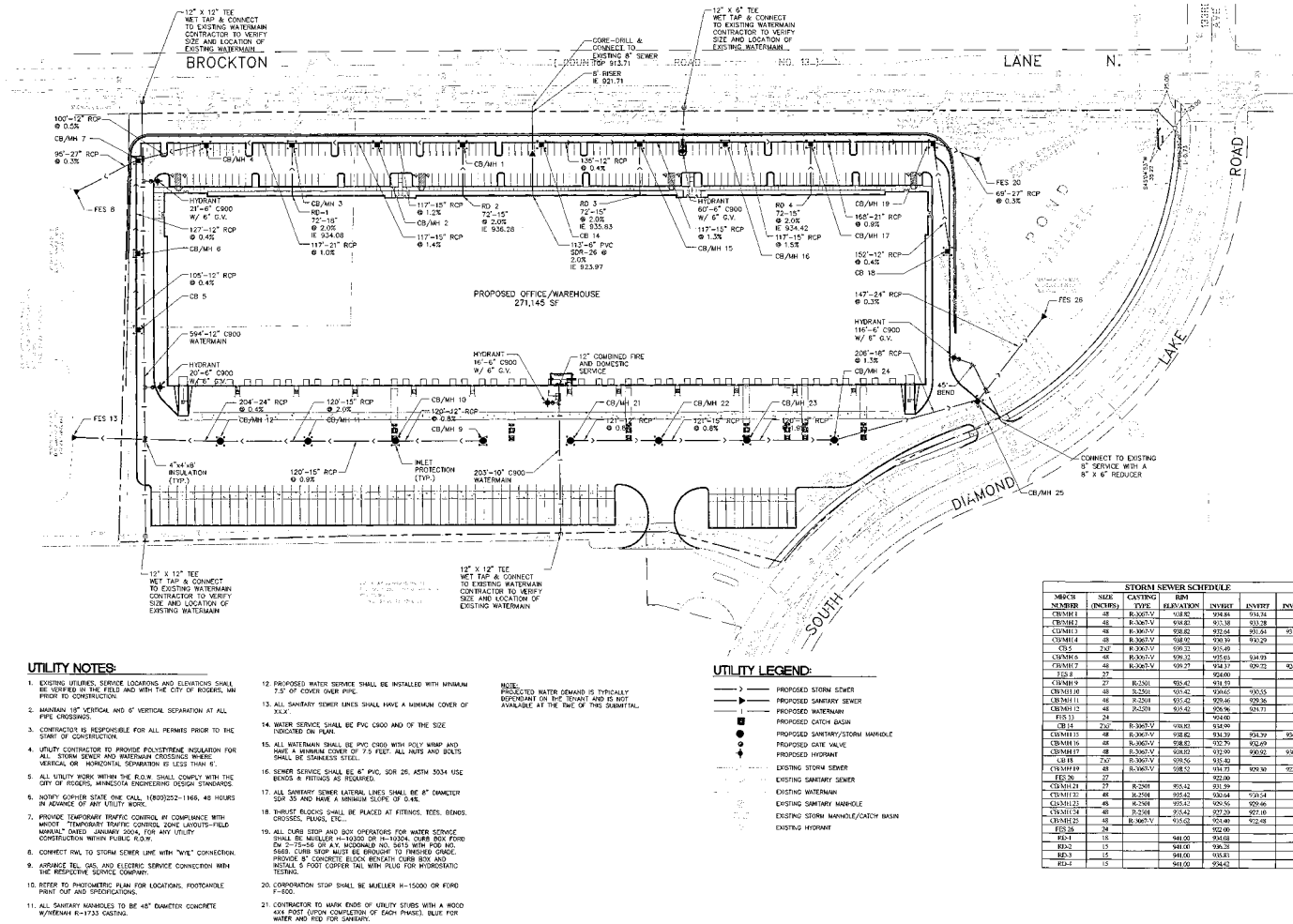
AERIAL

MAP

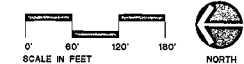
BLDG PLAN

UTILITY PLAN

SITE PLAN



UTILITY PLAN



North Star Distribution Center

19730 South Diamond Lake Rd, Rogers, MN



CSM



CUSHMAN & WAKEFIELD

HOME

HIGHLIGHTS

BLDG FEATURES

AERIAL

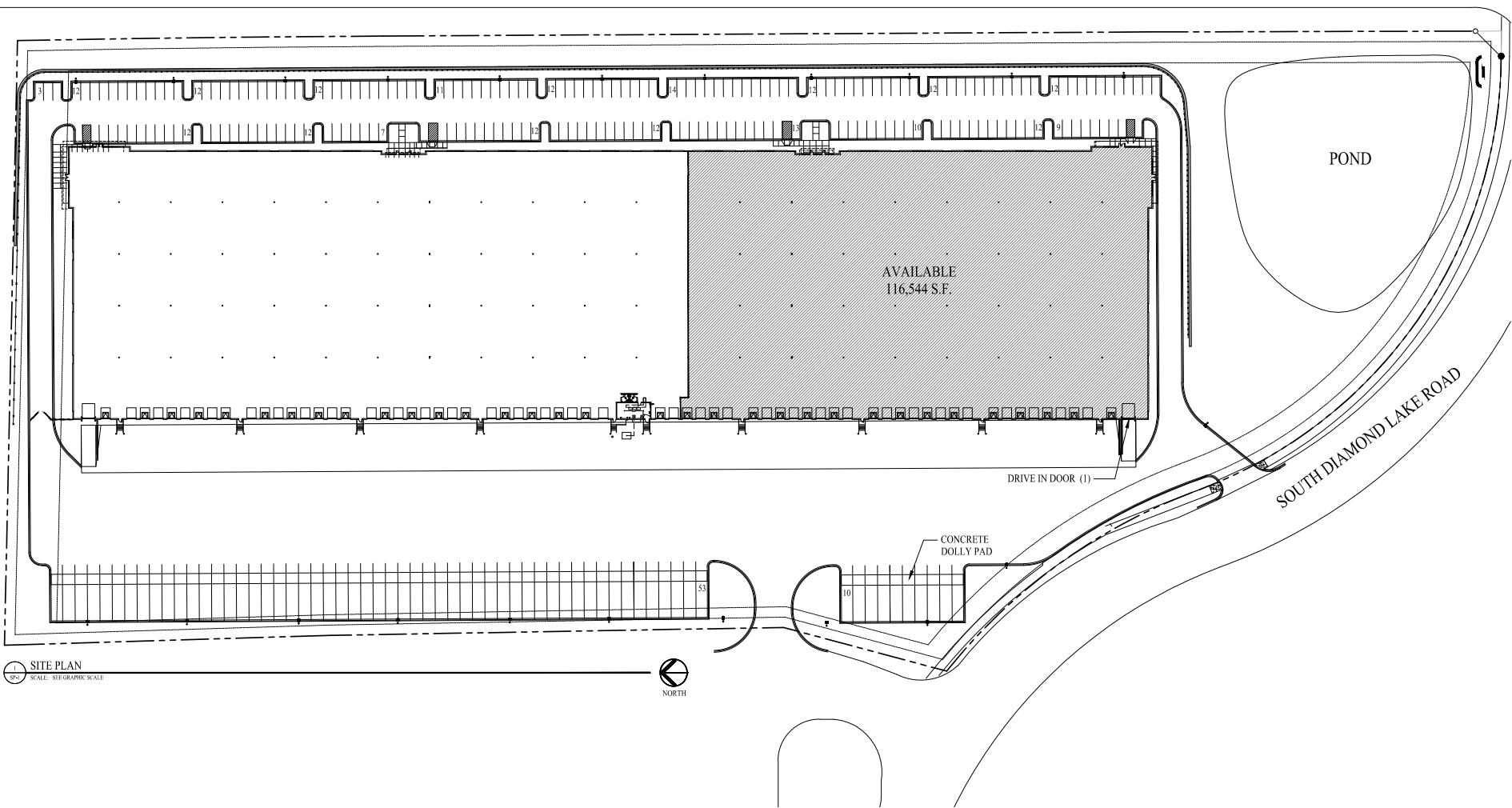
MAP

BLDG PLAN

UTILITY PLAN

SITE PLAN

BROCKTON AVENUE NORTH



SITE PLAN
SCALE: SEE GRAPHIC SCALE



NORTH STAR DISTRIBUTION CENTER
19730 SOUTH DIAMOND LAKE ROAD
ROGERS, MN 55374

DATE:
DRAWN BY:

JUNE 19, 2018
MATT ROBERTSON



CSM
500 Washington Avenue South, Suite 2000
Minneapolis, MN 55415
Tel: (612) 396-7000 Fax: (612) 396-7002
DEVELOPING REAL ESTATE FOR PROGRESS,
BUSINESS & COMMUNITIES

SP-1

G:\Arch 2008\Projects\North Star Distribution Center\Exhibit\North Star Distribution Center Site Plan - 11/8/18\road Exhibit.dwg