

# FOR LEASE | RETAIL

## WOODBURY MARKETPLACE

9955 Hudson Pl., Suite 550 • Woodbury, MN



### Retail space in the heart of Woodbury

#### ABOUT THE PROPERTY

- Rare end cap vacancy with a patio
- Co-tenants include: Chipotle, T-Mobile, Caribou Coffee and Smashburger
- Other area retailers include Sam's Club, Target, Walmart, Hobby Lobby, Trader Joe's and Woodbury Lakes Lifestyle Center
- Located on the high demand corner of Woodbury Drive and Hudson Road

CONTACT: Justin Wing  
P: 612.395.7038  
C: 612.508.1128  
E: [jwing@csmlcorp.net](mailto:jwing@csmlcorp.net)



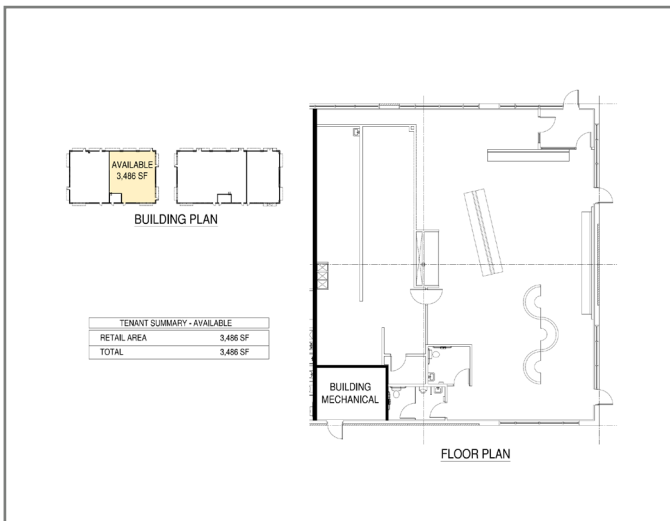
**CSM**

WORK WITH AN INDUSTRY LEADER  
[www.csmlcorp.net](http://www.csmlcorp.net)

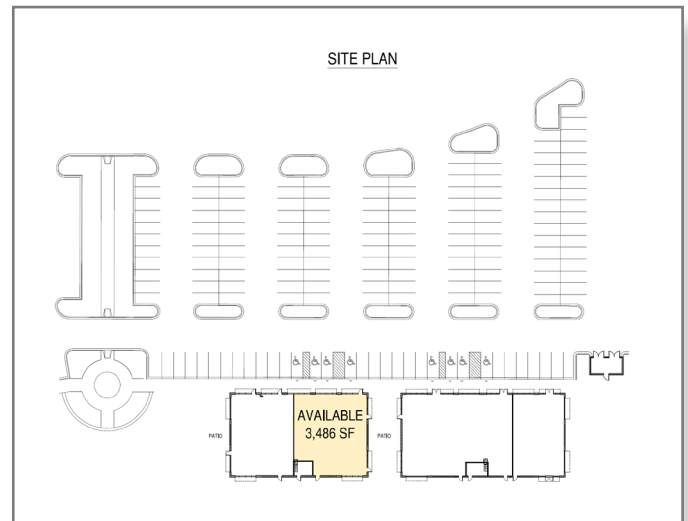
# WOODBURY MARKETPLACE

9955 Hudson Pl., Suite 550 • Woodbury, MN

AVAILABLE SPACE: 3,486 sf  
 BASE RENTS: Negotiable  
 OPERATING EXPENSES: \$6.82 sf for 2019  
 UTILITIES: Utility services to be separately metered



FLOOR PLAN



SITE PLAN



CONTACT: Justin Wing  
 P: 612.395.7038  
 C: 612.508.1128  
 E: jwing@csmcorp.net